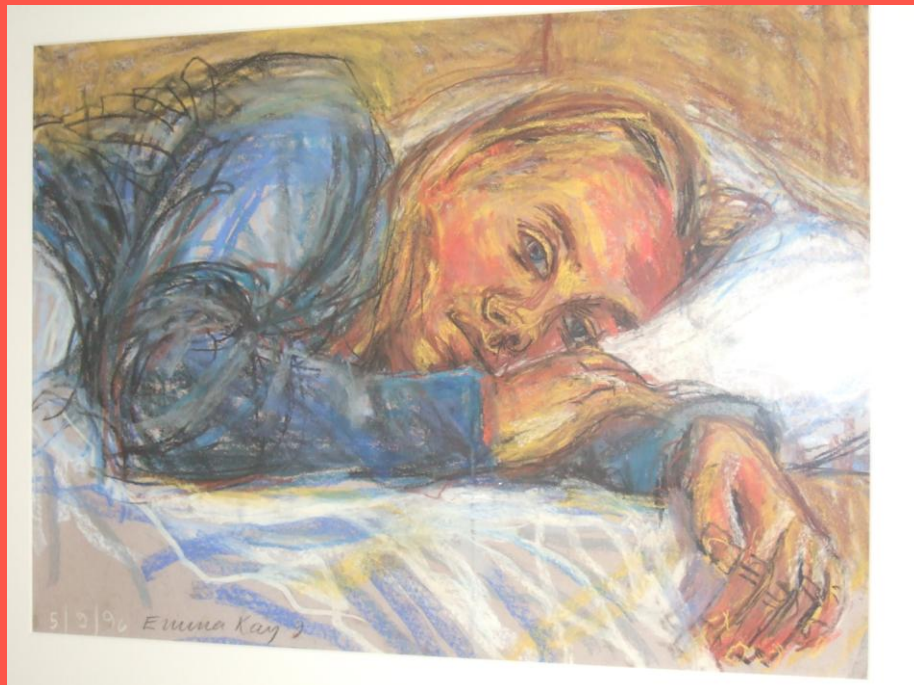




Sense Making Faith p21



Emma Kay (1961-) is an artist and a Christian who sees her faith at work in her art and in her life.



UNTITLED, BLUE AND WHITE 1996

If you live in London you might best know Emma's work from the Tube, where her painting of the London Underground lines as concentric circles can be seen on a number of stations.

One of Emma's interests is in exploring human memory. A number of her art works are textual, in which she lists or explores what she can remember of Shakespeare, or the Bible, or a map of the world without looking anything up or doing any research. Inevitably, there are gaps, mixings, and mistakes, but the things which are remembered also come out strongly, as somehow precious because they are remembered, not forgotten. She also makes it clear to us that, no matter how well we think we know the Bible for example, we could never carry it all about in our heads. If we were called on to reconstruct it, if all the Bibles in the world disappeared, what kind of 'authoritative' text would emerge?

Exploring: Receiving Grace



By kind permission of Professor Tak and Mrs Andree Lee

Emma's series of paintings of hands concentrates on how we use our hands to express everything about who we are. Hands are capable of delicate touch, terrible violence, joy, love, refusal or spiritual exaltation and thanksgiving. In *Receiving Grace*, hands are raised in what? Thanks? Joy? Pleading? The hands reach out to heaven, or God, but they could also be the hands of a person reaching out for needed food or water, or the hands of another person. These could be the hands of the Prodigal or the hands of a person at worship.

? What does Emma's painting of hands in *Receiving Grace* say to you?

? This is another of Emma's paintings entitled *Rose*. What does this hand say to you?

