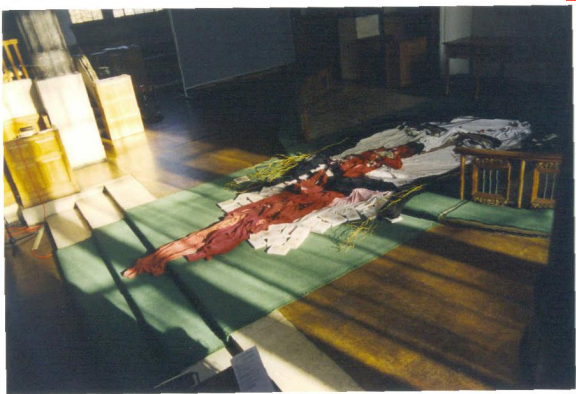
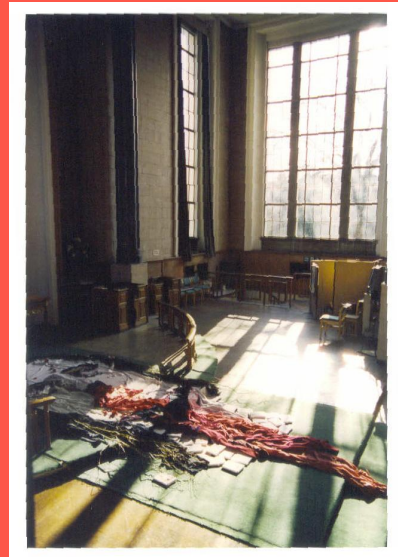
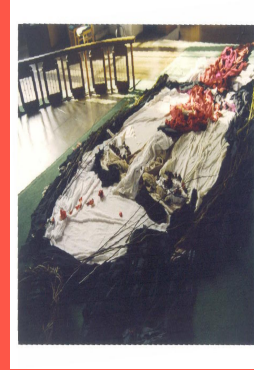


# Christ as Clothes



*Sense Making Faith, p. 75*





**This installation was produced by Miriam Kings for the Easter services at her father's church, St Mary's Islington. The clothes, laid out on Good Friday as the image of Christ before the altar, were taken up by the congregation and symbolically 'buried' beneath the altar, the communion table. The installation was also made up of women's clothes, recalling the women who followed and sorrowed for Jesus and whose lives were bound up with his, including his mother, Mary.**

**There are larger images of this installation in the **Touch** section of **Explore** on this website.**

**Here is a description of the installation by the artist:**

## **The Blood of Christ**

**The installation is about making Communion real. We drink the blood of Christ, from the crucifixion, so the the face is Jesus' expression while being crucified. The size of it adds to the feeling I was trying to get across, and the feeling I wanted to get across is Tragedy. Not that it can't be celebratory, but it must be utterly tragic. I used clothes, basically, just as a medium but as I carried on they started to mean more to me.**

**Eg they drag downwards which creates gravity, a force pulling like tension...and have an essence of those white cloth linen dresses they wore, we associate Jesus with... (Even if people don't know) they add Mary into the scene, they are women's clothes and Mary is always nearby**

(large percentage of artworks showing Jesus have Mary with him), she was at the foot of the cross, so I quite like her presence being there.

Another point is it is kind of 3D 2D and you can't see it properly – unless you fly above it – So you have to work out the perspective and face cos its not just a simple image of Christ's face you can glance at. (Which was essentially the point, to make people interested in communion).

Miriam Kings

Exploring:

? What do the colours in the face of Christ mean to you?

? What does the face make you think about?

? How does the image relate to the communion table?

? How do you feel about the face of Christ being made of women's clothes?

? What effect does 'seeing' Christ in this way have on your imagination?

There are more faces of Christ in the **See** section of this website

You can also explore faces through mask making in the **Touch** section of this website